

# MONOTYPES

BY KINNASAND

**kvadrat**

## MONOTYPES

Composition	Item	Item No.	Colours	Page
<b>Curtains</b>				
100 % WOOL	<b>Coastland</b>	7074	8	6
	<b>Highland</b>	7076	12	10
	<b>Island</b>	7075	4	14
100 % HEMP	<b>Even</b>	7079	10	20
	<b>Nomen</b>	7078	9	24
	<b>Open</b>	7077	10	28
100% LYOCELL TENCEL™	<b>Float</b>	7080	9	34
	<b>Floating</b>	7081	9	38
100% POLYESTER RECYCLED	<b>Repeat</b>	7083	4	44
	<b>Torsion</b>	7082	9	48

## MONOTYPES

Reduce to reveal. Let the true nature of material speak for itself.

The *Monotypes* collection by Kinnasand expresses the beauty of pure compositions made of 100% circular materials. Wool. Hemp. Lyocell. Recycled polyester.

*Monotypes* modulates the signature characteristics of these materials through a puristic yet refined approach towards manufacturing processes and finishes. Materiality does not just shape the design – it is the design.

Precise weaving constructions reflect the individual essence and cellular architecture of each mono-material. A woollen sablé, with natural mélange yarns, mirrors how wool looks under a microscope, while a graphic, net-like leno weave references the rhythmic manufacturing of recycled polyester.

Yarns exclusively developed for *Monotypes*, ranging from high-torsion to twisted moulinées and alternating slub yarns, highlight the specific material and drape properties. In parallel, dyed and non-dyed yarns combine to express lively and true natural notes.

On another level of modularity, *Monotypes* journeys into material dimensions through a scale of transparencies from translucent to opaque. Spirited dynamics between colours and weaves further explore the origins of the materials, and the poetic associations they provoke.

The collection's colour palette flows from light pigments and weathered shades to organic nuances and tones infused with the ethereal freshness of air and water. Modified primary colours add edge and depth, evoking the vibrancy of the man-made source material.

*Monotypes* also investigates the materials' personalities by elevating tactile properties. To sensual effect, the designs in the collection accentuate the warmth of wool, the crispness of hemp, the softness of lyocell, and the smooth coolness of recycled polyester.

Ultimately, the *Monotypes* collection transforms the raw spirit of circular materials, opening up an inspiring source of infinite combinations. It reshapes our sensory perception of interior spaces.

100% WOOL



# Coastland



**Colour 13**  
Cool Light Grey

## 7074

The pure use of wool is associated with softness, insulation and comfort. *Coastland* transforms these attributes into lightness and transparency – while still retaining an appealing sense of warmth. It migrates the rich experience of wearing a cosy garment into the idea of dressing architectural spaces.

*Coastland's* Twill weave, which originates from the world of high fashion, plays with contradictions: coolness and warmth – and transparency and visibility. This expressive construction also lends the curtain a contemporary graphic touch.

The colour scheme for *Coastland* takes notes from nature while referring to nuances of stone, wood, sand and organic shades like Basalt, Light Wood, Sahara, Dark Sepia, Olive Ochre and Dark Moss.

**Height** 312 cm (123")

**Material** 100 % wool

**Colours** 8

# Coastland



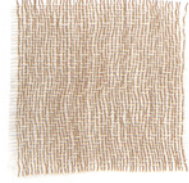
**Colour 02**  
Wool White



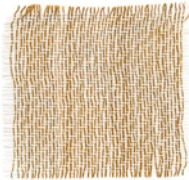
**Colour 13**  
Cool Light Grey



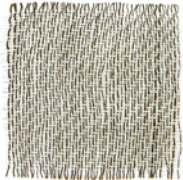
**Colour 16**  
Light Wood



**Colour 07**  
Sahara



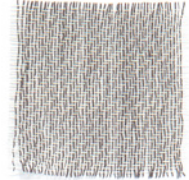
**Colour 12**  
Olive Ochre



**Colour 14**  
Dark Moss



**Colour 26**  
Dark Sepia



**Colour 23**  
Basalt

# Highland



**Colour 23**  
Inky Black

## 7076

Highly refined *Highland* has a puristic, fluid drape and an exceptionally tactile touch. It is constructed from Merino Superfine Wool.

*Highland* adapts harmoniously to all high-end interiors. Its Satin weave, which has its origins in dressmaking, is comprised of finely combed long-staple fibres spun into long-lasting, aesthetically clean yarns. The finishing process for the curtain uses extreme temperature contrasts to enhance the volume of the wool and add a subtle lustrousness.

The delicate piece-dyed colours for *Highland* interlink the warm with the cool, and the light with the dark. They include Pine, Lavender, Angora, Light Cinnamon, Clay, Light Sand, Chalky Mauve and the rich expression of Inky Black.

**Width** 145 cm (57")

**Material** 100 % wool

**Colours** 12



# Highland



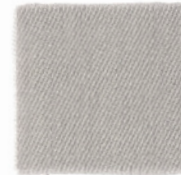
**Colour 01**  
White



**Colour 03**  
Light Sand



**Colour 13**  
Silver Cloud



**Colour 33**  
Storm Grey



**Colour 21**  
Lavender



**Colour 14**  
Pine



**Colour 23**  
Inky Black



**Colour 16**  
Clay



**Colour 20**  
Light Cinnamon



**Colour 15**  
Chalky Mauve



**Colour 05**  
Angora



**Colour 02**  
Wool White



# Island



**Colour 02**  
Wool Light

# 7075

Natural in feel, like taking a walk in the countryside, *Island* is the ideal textile companion to bring calmness to your home. Like a woven archetype of woollen cloth, it is crafted with unbleached and natural-coloured wool yarns, combined with a mix of minimally dyed fibres.

*Island's* distinctive texturized structure is achieved using a vivid sablé effect, which in combination with the subtle blend of melange yarns, mirrors the visual appearance of wool viewed through a microscope. The textile's sandy, granular feel is created by a purely mechanical treatment together with soft washing.

The palette references natural wool tones, ranging from warm light towards cooler and darker notes.

**Height** 320 cm (126")

**Material** 100 % wool

**Colours** 4

# Island



**Colour 02**  
Wool Light



**Colour 03**  
Shaded Wool



**Colour 06**  
Musket



**Colour 13**  
Steely Grey



100% HEMP



# Even



7079

Durable and strong by nature, *Even* stimulates the senses simply by using the characteristic crispy feel and the alternating yarn texture of hemp. Its semi-transparent twill construction catches the eye with its pronounced natural look and voluminous, bouncy drape.

Piece-dyed, the colour palette for *Even* ranges from saturated hues to the weathered, sun-dried notes found in fields. Nuances of Straw, Beetroot, Golden Green, Deep Olive and Khaki Grey awaken memories of late summer days.

**Height** 315 cm (124")

**Material** 100 % hemp

**Colours** 10

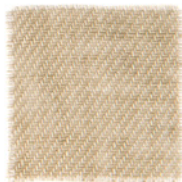
# Even



**Colour 01**  
Clear White



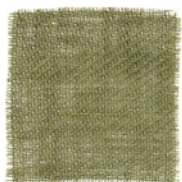
**Colour 02**  
Soft Offwhite



**Colour 06**  
Straw



**Colour 20**  
Sahara



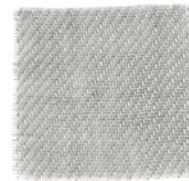
**Colour 14**  
Deep Olive



**Colour 11**  
Bluestone



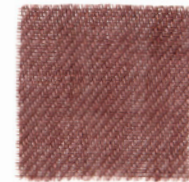
**Colour 13**  
Chalk



**Colour 33**  
Khaki Grey



**Colour 12**  
Golden Green



**Colour 10**  
Beetroot



# Nomen



7078

*Nomen* is a sumptuous, characterful curtain with a shimmering colour expression and a fine lustre. Dense and opaque, it maintains a bouncy, optimistic feel with a distinctly defined drape.

The pronounced diagonal lines of the weaving design appear through a modified twill construction, which adds stability and durability. The yarns for *Nomen* are custom-made in a process during which contrasting coloured yarns are twisted around each other, creating a vivid dialogue and a rich Mouliné effect.

The palette for *Nomen* comprises refined organic notes, which play with the perception of material and colour. It includes tones such as Cherry Tree, Misty Lavender, Dark Olive, Hay, Hazy Rust and Desert.

**Height** 311 cm (122 ½")

**Material** 100 % hemp

**Colours** 9

# Nomen



**Colour 01**  
Soft White



**Colour 13**  
Light Grey



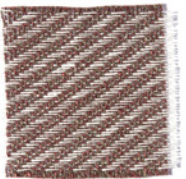
**Colour 03**  
Ivory



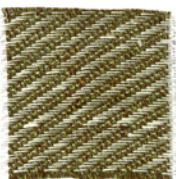
**Colour 06**  
Desert



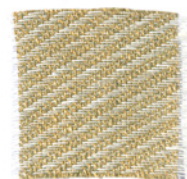
**Colour 25**  
Misty Lavender



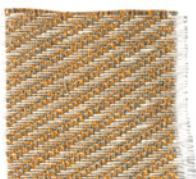
**Colour 16**  
Cherry Tree



**Colour 14**  
Dark Olive



**Colour 12**  
Hay



**Colour 20**  
Hazy Rust



# Open



7077

*Open* is a super-natural, lively and casual plain with an artisanal spirit. Due to the sophisticated use of hemp in the curtain's pure material composition, the crispness and slight irregularities of the alternating yarns show up and bring out the specific character of the material.

The curtain strikes a finely tuned balance between the appearance and non-appearance of colour. Stony, cooler notes underline a softness in the lighter shades while accents of rich green and deep blue maintain freshness and recall nature's elementary hues: Soft Blush, Honey Dew, Pale Lime, Dark Sea, Fresh Forest, and Dark Wood.

**Height** 290 cm (114")

**Material** 100 % hemp

**Colours** 10

**Colour 14**  
Fresh Forest

# Open



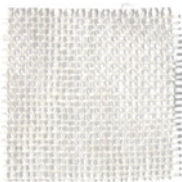
**Colour 01**  
Soft White



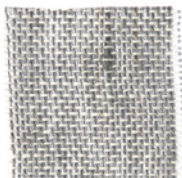
**Colour 05**  
Soft Blush



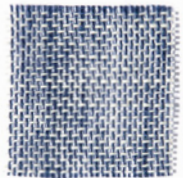
**Colour 06**  
Soft Hemp



**Colour 13**  
Soft Grey



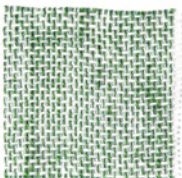
**Colour 33**  
Piombo



**Colour 11**  
Dark Sea



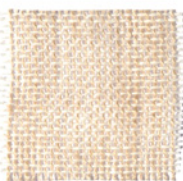
**Colour 16**  
Dark Wood



**Colour 14**  
Fresh Forest



**Colour 24**  
Pale Lime



**Colour 15**  
Honeydew



100% LYOCELL



# Float

7080

Soft, smooth and silky in look and touch, *Float* is a dense plain that expresses cool elegance through its fluid drape and fine shine. Made of the material lyocell, which is of botanic origin, it is constructed with a strong, durable weave.

The colour palette is modulated and mirrors the organic sources used to craft the material. It comprises a subtle scale of nuances that includes Eucalyptus, Pale Khaki, Light Red Oak, Aqua and Blue Ash, Natural Offwhite and Stony Grey.

*Float* offers multiple uses, including vibrant mix-and-match combinations with its transparent partner *Floating* (see next page).

**Height** 315 cm (124")

**Material** 100 % lyocell | TENCEL™

**Colours** 9



**Colour 33**  
Blue Ash

# Float



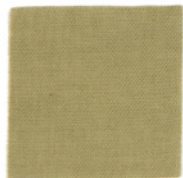
**Colour 01**  
White



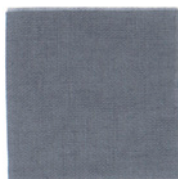
**Colour 02**  
Natural Offwhite



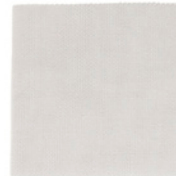
**Colour 15**  
Light Red Oak



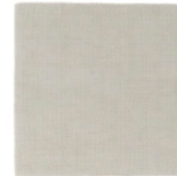
**Colour 14**  
Pale Khaki



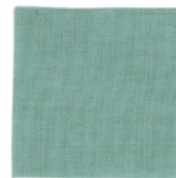
**Colour 33**  
Blue Ash



**Colour 13**  
Light Cool Grey



**Colour 06**  
Stony Grey



**Colour 24**  
Eucalyptus



**Colour 11**  
Aqua



# Floating



**Colour 15**  
Light Red Oak

7081

*Floating* is a luminous and lightweight lyocell curtain with a fine fluctuating shine, which almost seems to silkily materialize air. Uplifting in character and ultra-soft, it has a special weave which brings a sensual tactility and distinctive drapability to its natural, light-emitting transparency.

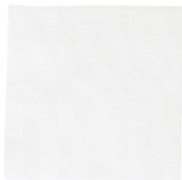
*Floating* offers multiple uses, including eye-catching mix-and-match combinations, with its dense sibling *Float* (see former page). Although the textile shares its colour concept with *Float*, the dyed notes of its palette have a rather more dream-like expression.

**Height** 315 cm (124")

**Material** 100 % lyocell | TENCEL™

**Colours** 9

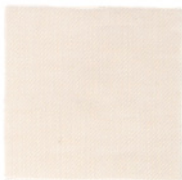
# Floating



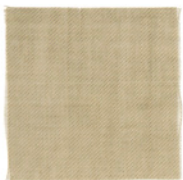
**Colour 01**  
White



**Colour 02**  
Natural Offwhite



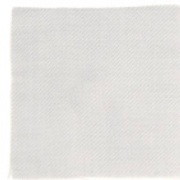
**Colour 15**  
Light Red Oak



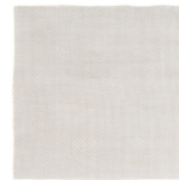
**Colour 14**  
Pale Khaki



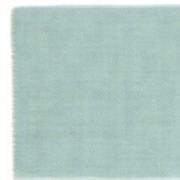
**Colour 33**  
Blue Ash



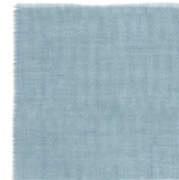
**Colour 13**  
Light Cool Grey



**Colour 06**  
Stony Grey



**Colour 24**  
Eucalyptus



**Colour 11**  
Aqua



100% PES | RECYCLED



# Repeat



**Colour 33**  
Moon Mist

## 7083

*Repeat* is a textured, rustic plain, made of pure recycled polyester yarns, which features a net-like lino weave with a clear-cut expression. Its precise construction references the origins of its material: rhythmic high-tech manufacturing processes.

The palette for *Repeat* adds an extra dimension of versatility to its applicability. It consists of graphical, distinct yet neutral shades of White, Silver Cloud, Sesame and Moon Mist.

**Height** 310 cm (122")

**Material** 100 % polyester | recycled

**Colours** 4

# Repeat



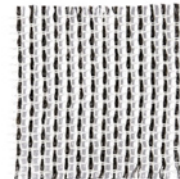
**Colour 01**  
White



**Colour 06**  
Sesame



**Colour 13**  
Silver Cloud



**Colour 33**  
Moon Mist

# Torsion

7082

*Torsion* is created with an extremely refined recycled polyester yarn made using multifilaments derived from post-consumer bottles. This is twisted with high torsion and then interwoven with a spun yarn to give the curtain its appealing streaky, almost cotton-like look and feel.

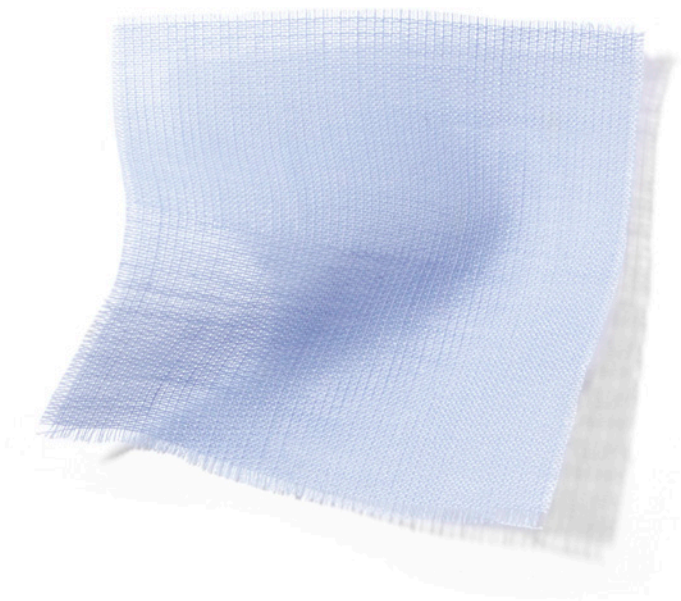
The finishing process, which includes a very subtle calender treatment, is specially adapted to preserve *Torsion's* lightly structured, natural character.

*Torsion's* colour palette incorporates modified primaries, which evoke the vibrancy of human-made sourced material: Lemon Zest, Marine Algae and Dark Ink.

**Height** 318 cm (125")

**Material** 100 % polyester | recycled

**Colours** 9



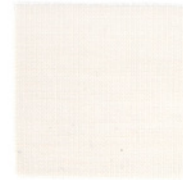
# Torsion



**Colour 01**  
White



**Colour 02**  
Offwhite



**Colour 05**  
Blossom



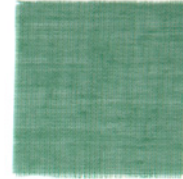
**Colour 13**  
Silver Sky



**Colour 33**  
Dark Stone



**Colour 12**  
Lemon Zest



**Colour 14**  
Marine Algae



**Colour 11**  
Dark Ink



**Colour 21**  
Lavender





## 100% WOOL

Wool is an animal fibre, derived from sheep fleece.

### **Advantages of wool**

#### **Comfortable**

Wool is comfortable, as it is soft and breathable. Thanks to its insulating properties and ability to absorb moisture, wool is suitable for both cold and hot climates.

#### **Hardwearing**

Woollen fabric has minimal tendency to crease and ages elegantly, due to its high elasticity.

#### **Environmental advantages**

- A natural fibre, wool is biodegradable and a renewable resource
- The wool used is from sheep that have not been subject to mulesing
- Naturally stain-resistant and flame retardant as its ignition temperature is very high
- Long lifespan
- Complies with REACH
- Follows the EU Ecolabel dye restrictions, including AZO dyes and heavy metal restrictions



## 100% HEMP

Hemp is a natural plant fibre, cultivated with low impact on the environment.

### **Advantages of hemp**

#### **Comfortable**

Hemp has a linen-like feel and crispy touch. Its breathability and ability to absorb moisture makes it suitable for both hot and cold climates.

#### **Durable**

Hemp is strong and durable.

#### **Environmental advantages**

- A natural fibre, hemp is biodegradable and a renewable resource
- Hemp plants grow in many climate zones and require only a minimal amount of agricultural chemicals during cultivation
- Hemp plants aerate and build topsoil, so they are suitable for crop rotation
- The stems of the hemp plants, which are surplus to the hemp seeds used by other industries, are used for our textiles. This approach ensures almost no part of the plant is wasted
- Complies with REACH
- Follows the EU Ecolabel dye restrictions, including AZO dyes and heavy metal restrictions



Lyocell is a regenerated fibre made from wood-based cellulose.

### **Advantages of lyocell**

#### **Comfortable**

Lyocell is very soft and breathable. Thanks to its ability to absorb and release moisture, lyocell creates a healthy interior climate.

#### **Durable**

Lyocell has a high wet-and-dry-tenacity and is stronger than other viscose fibres.

#### **Environmental advantages**

- Made from traceable wood, lyocell comes from a renewable natural resource
- In contrast to other viscose fibres, lyocell is produced in a closed-loop organic solvent-spinning process, in which 99% of the organic solvents used are recovered and reused
- The wood pulp is processed without any chemical transformation
- Lyocell fibres are naturally white after the spinning process and do not need any of the bleaching that other viscose types require
- Complies with REACH
- Follows the EU Ecolabel dye restrictions, including AZO dyes and heavy metal restrictions



## 100% PES | RECYCLED

Recycled polyester used for this collection is made from post-consumer PET bottles.

### **Advantages of recycled polyester**

#### **Comfortable**

Recycled polyester dries fast and has hypoallergenic properties.

#### **Durable**

Recycled polyester is hardwearing, resilient and washable at high temperatures.

#### **Environmental advantages**

- Textiles made from a recycled resource like PES recycled require less petroleum for processing
- All recycled plastic avoids landfill, helping to reduce soil contamination
- Less water and energy are required for production
- Textiles made from recycled polyester are designed to be continuously recycled with no degradation of quality. They offer the potential for a closed-loop system
- Complies with REACH
- Follows the EU Ecolabel dye restrictions, including AZO dyes and heavy metal restrictions

## CERTIFICATIONS

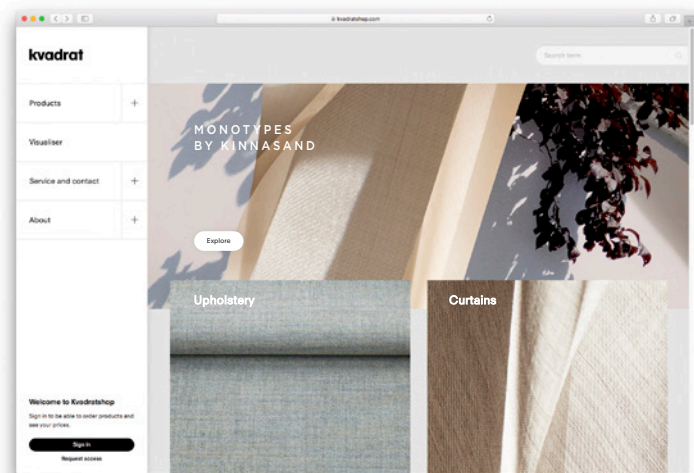
### **REACH compliant**

REACH is a regulation of the European Union, adopted to improve the protection of human health and the environment from the risks that can be posed by chemicals. REACH stands for Registration, Evaluation, Authorisation and Restriction of Chemicals. To ensure our products live up to the EU's strict requirements, we comply with the latest standards for REACH, including the REACH SVHC list.

### **Follow EU Ecolabel dye restrictions**

The EU Ecolabel (EU Flower) sets strict environmental criteria for the entire life cycle of the product – from fibre to finished textile. Stricter than international guidelines on restricted substances, these criteria provide assurance that textiles carrying the ecolabel have a lower environmental impact.

## KVADRATSHOP



### Place your orders online with Kvadratshop

Kvadratshop.com is our e-commerce platform, created to make it easier for you to do business with us. On top of this, it also offers a lot of functionalities to help you improve your business.

#### Accessible 24/7

Get access by requesting a personal log-in on kvadratshop.com. Place orders on your own schedule and get immediate updates on what we have in stock.

#### Flexible ordering

The shop gives you full control of your orders. You can use multiple delivery addresses and ship samples directly to your customers.

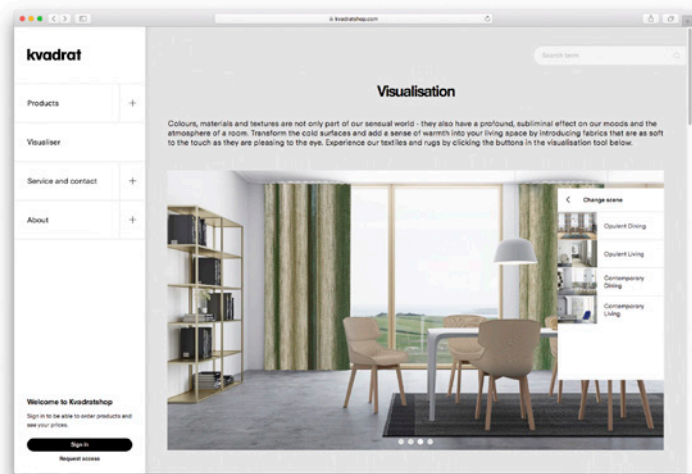
#### Order status

Regardless whether your order was placed online or offline, the shop will give a complete overview of your order status and history.

#### Sales tool

The shop is also a visual sales tool that helps you present products and provide guidance at the sales conversation in store. Furthermore, the shop lets you toggle between your purchase prices and recommended prices for retail.

## VISUALISATION TOOL



### Kvadratshop visualisation tool

Colours, materials and textures are not only part of our sensual world – they also have a profound, subliminal effect on our moods and the atmosphere of a room. Transform the cold surfaces and add a sense of warmth into your living space by introducing fabrics that are as soft to the touch as they are pleasing to the eye.

Seeing is believing – to help the customer in the decision journey we have developed a visualisation tool that makes it possible to experience a selection of our textiles and rugs in different room settings on the Kvadratshop.

Inspire your customer by using the visualisation tool to present the Kinnasand collection in situ.



