



SOCIETY  
— LIMONTA —

*50s  
DESIGN'  
SHADES*

SS 18 COLLECTION

---

# 50s DESIGN' SHADES

---

SS 18 COLLECTION

The new trend for the next 2018 spring/summer collection introduces in every Society Limonta home, its contemporary design style inspired by a minimalistic and vintage look.

A strong chromatic selection, directly from the 50's. Floral, graphic or painted patterns, with stripes and energetic polka-dots which draw their vitality from an extra-fresh colour palette with sorbet shades ranging from the lightest to the strongest tones. Pistachio or Agave or Pine tree greens, combined with an intense Lagoon blue or with the must-have colour of the season, Pink, in all its possibilities, from the lightest powder-pink to the powerful Lychee red.

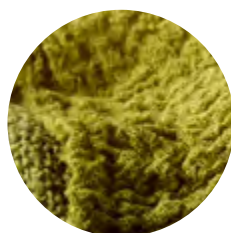
A wide range of opportunities, to create your mix&match style: light and dark shades of the same colour, odd and contrasting colours, like green and red, or pink and pistachio green for a stronger effect. Society Limonta's research for new fabrics, gives an even more distinctive look to the homely-side of fashion.



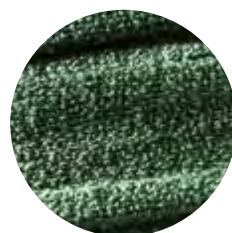
PINK



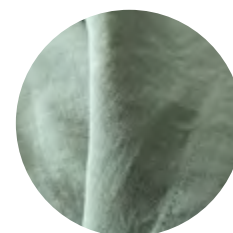
LYCHEE



PISTACHIO



FIR



AGAVE



LAGOON



*BED LINENS • SS 18*

**SOCIETY**  
— LIMONTA —



*2018 SPRING SUMMER*

*BED LINENS*



## *The bedroom, the “homely-side” of fashion*

The bed linen world can count on a new and extremely chic atmosphere.

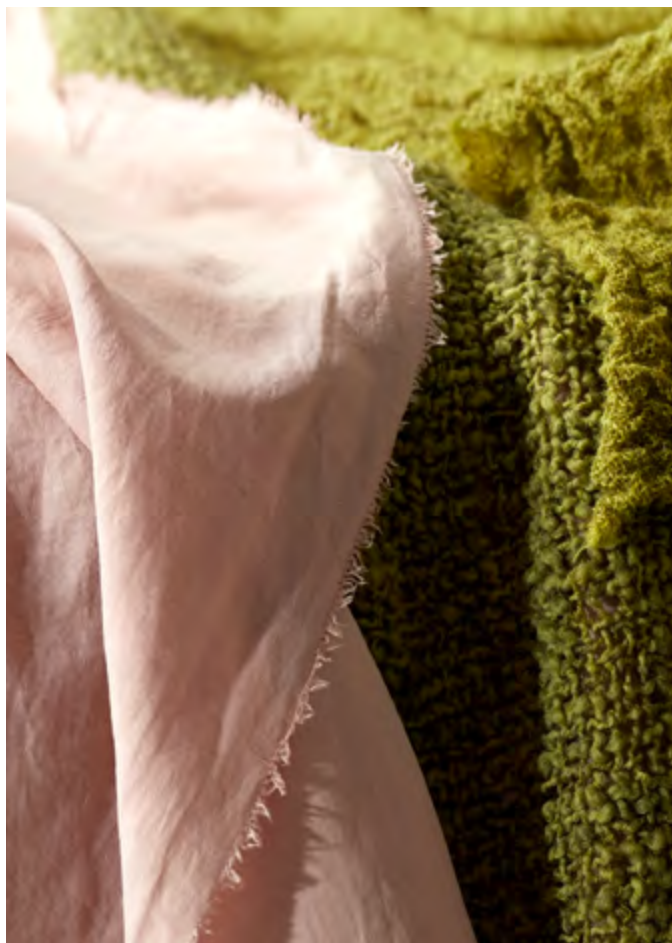
SATEN is a satin linen and cotton sheet, very sophisticated and raw at the same time. It has an unusual fringed border, fresh and lively for the summer, and very different from any traditional sheets, which come with a defined and hemmed border. One side is semi-bright with a soft and silky touch, while the other has the dryer and mat feel of linen. A real garment for the bed accompanied by its pillowcases: the new fashion item for the 2018 spring-summer season.

A light cloud in printed cotton voile, with soft and coloured patterns. This is CANDY, an impalpable and embracing sheet, which can be used as a light bedspread with an eccentric and original personality. Just like any fashion accessory, the printed pillowcases give a twist to the bed's look by matching and combining the different patterns and colours. The spring/summer patterns are a new graphic and pictorial version of the classic floral designs, matched with hand-painted stripes, multi-colour polka dots or geometric patterns like giant confetti.

BIG is a jaspé wool throw with a net weave; the summer version of the bouclé wool throws with fringed borders. Dry and light, it confers the perfect warmth for the brightest of all seasons; with its soft volumes it's the completing touch for any summer bed.



on the bed (also on the previous page): NITE extra fine cotton sheet, SATEN satin linen and cotton sheet, NAP ASTER / NAP PANSY printed ramie pillow cases and WOCA wool and hemp blankets



SATEN satin linen and cotton sheet and BIG jaspé wool plaid



SATEN satin linen and cotton sheet and BIG jaspé wool plaid



SATEN satin linen and cotton sheet and pillow case and FREE NEW four layers cotton bedspread



## BED LINENS · SS 18

SOCIETY  
— LIMONTA —



on the bed: REM linen sheet (bottom), NITE extra fine cotton sheet, NAP WOOD printed ramie pillow cases, REM linen pillow cases and cushion, WOCA wool and hemp blanket and BIG jaspé wool plaid





on the bed: BINI cotton jacquard sheet (bottom), SATEN satin linen and cotton sheet, BIG jaspé wool plaid, NAP PANSY printed ramie pillow cases and REM linen cushion. on the floor: CAWO wool and hemp rug.





on the bed: NITE extra fine cotton sheet (bottom), REM linen sheet, SATEN satin linen and cotton pillow cases, NITE extra fine cotton sheet, FREE NEW four layers cotton bedspread and WOCA wool and hemp blanket.



## BED LINENS · SS 18

SOCIETY  
— LIMONTA —



on the bed: SATEN satin linen and cotton sheet, CANDY Printed cotton voile sheet, NAP SHAPES printed ramié pillow cases and REM linen cushion.





above: NAP PALM printed ramie pillow case. on the bed: SETU double layer cotton silk sheet, FREE NEW four layers cotton bedspread and BIG jaspé wool plaid.







on the bed: REM linen sheet (bottom), SATEN satin linen and cotton sheet, NAP ASTER printed ramié pillow cases, LOSE wool gauze blanket, BIG jaspé wool plaid and REM linen cushion. on the floor: CAWO wool and hemp rug.



## BED LINENS • SS 18

SOCIETY  
— LIMONTA —



on the bed: REM linen sheet (bottom), SATEN satin linen and cotton sheet, NAP ASTER printed ramie pillow cases, LOSE wool gauze blanket, BIG jaspé wool plaid and REM linen cushion. on the floor: CAWO wool and hemp rug.



TABLE LINENS • SS18

SOCIETY  
— LIMONTA —





## *A 50's couture table*

Elegant like an evening dress right out of the 50's. This is WOOD, the “incomplete” tablecloth, in printed abaca fabric, with a very dense vintage design on one side, which ironically thins down and disappears on the other side. Flowers and leaves in just one version, overlay different types of green, from a sage green to a dark petrol shade of the same colour.

For easy chic summer lunches, you can use CHINO and BOT, printed linen place mats. The first one has the same giant confetti used for the pillowcases, while the second one has a crowded pattern full of bottles and pitchers standing on imaginary shelves. A sort of kitchen tools' library in three colour variations. An amusing recollection of the 50's which gives a fresh and lively touch to the table, with matching dishcloths and removable front pieces for the linen aprons. At last, a series of coloured patterns used also for the pillowcases, for a vivid summer napkin collection, in a light ramie. Another fashion accessory for the table.



on the table (also on the previous page): WOOD printed manila hemp tablecloth, TAB FR linen napkins, ONDA Limoges porcelain dinner and soup plates.





on the table: WOOD printed manila hemp tablecloth, TAB FR linen napkins, ONDA Limoges porcelain dinner and soup plates.





on the table: BOT 2 VE printed linen table mats, TAB linen napkins and BUTO Limoges porcelain soup plates.





BUTO Limoges porcelain  
dinner plate

BUTO Limoges porcelain  
soup plate

MAYA linen canvas table mat

NAP ASTER printed  
ramié napkin

NAP WOOD printed  
ramié napkin



ONDA Limoges porcelain  
dinner plate

BUTO Limoges porcelain  
side dish

BOT 2 VE printed linen table mat

TAB FR linen napkin

NAP PLAIN ramié napkin





BUTO Limoges porcelain  
dinner plate

BUTO Limoges porcelain  
soup plate

BOT 3 R0 printed linen table mat

TAB linen napkins



BUTO Limoges porcelain  
dinner plate

ONDA Limoges porcelain  
side dish

CHINO printed linen table mat

TAB linen napkins





ONDA Limoges porcelain  
dinner plate

ONDA Limoges porcelain  
side dish

DRAI cotton canvas table mat

NAP ASTER printed  
ramié napkin

NAP PLAIN ramié napkin



ONDA Limoges porcelain  
side dishes

MAYA linen canvas table mat

NAP PALM printed  
ramié napkin

TAB FR linen napkin





BUTO Limoges porcelain dinner plate

BUTO Limoges porcelain soup plate

DRAI cotton canvas table mat

NAP PANSY printed ramié napkin

NAP ROUND printed ramié napkin



ONDA Limoges porcelain dinner plate

ONDA Limoges porcelain side dish

MAYA linen canvas table mat

NAP SHAPES printed ramié napkin

NAP PALM printed ramié napkin





B0N linen apron and B0T 2 VE printed kitchen towel  
for linen apron

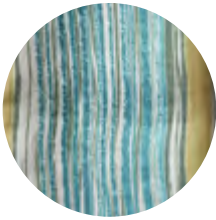




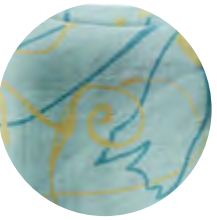
BON linen dish towel and CHINO and BOT printed linen dish towel.



NAPPALM



NAP WOOD



NAPASTER



NAP ROUND

NAP SHAPES

NAP PANSY



*BATHROOM LINENS • SS 18*

**SOCIETY**  
— LIMONTA —



*2018 SPRING SUMMER*

*BATHROOM LINENS*



## *A chic and unconventional bathroom*

A fresh palette where the Agave and Pistachio greens alternate with a more candy colour look, where a lychees red is combined with a light-powder pink. A sophisticated mix of neutral colours highlights the deep shades of the Lagoon blue, while grey-lovers can enjoy decorating the bathroom with a more graphic style, from white to the darkest charcoal grey.

This season's new trend is absolutely couture: COCO an overdye towel in jaspé cotton with fringed borders, which draws its inspiration from certain tailor fabrics, which have become a real icon of the fashion world.

The new towels have a strong feel, emphasized by a melange effect in different colours, which allow interesting combinations with other solid colour pieces. We like to think of COCO as a suit outfit for the bathroom. A chic and unconventional towel that didn't exist before today.



TOW griffé cotton towels, DRAI NEW linen towel and MOLTO cotton canvas bath mat.  
on the previous page: LIPE waffle weave linen bathrobe and towels.



TOW griffé cotton bath towel

LIPE waffle weave linen towel



COCO jaspé cotton towel

DRAI NEW linen towels



LIPE waffle weave linen towel

DRAI NEW linen towel





COCO jaspé cotton towels, DRAI NEW linen towels, TOW griffé cotton towels and LIPE waffle weave linen towels.  
on the floor: MOLTO cotton canvas bath mat and PLISS pleated cotton bath mat.







LIPE waffle weave linen towel, COCO jaspé cotton towel and CRISP crêpe cotton terry towel.



## BATHROOM LINENS · SS 18

SOCIETY  
— LIMONTA —



COCO jaspé cotton towel, LIPE waffle weave linen towel, CRISP crêpe cotton terry towel and TOW griffé cotton bath towel.





ACCESSORIES · SS 18

SOCIETY  
— LIMONTA —



2018 SPRING SUMMER

ACCESSORIES



## *Accessories for a natural style*

On holiday or for the city, a casual but sophisticated look. These are DRAI, our bags in a handy and soft cotton canvas in new and fresh summer colours. DRAI is the perfect match for DRINK a silk and linen scarf, the ultimate accessory for the 2018 spring/summer season. DRINK is a light scarf in linen, in its natural shade of colour, and yarn dyed silk, for an elegant melange effect.



DRINK silk and linen scarf





DRAI HANG cotton canvas shopping bag



DRAI BAG cotton canvas shopping bag



# SOCIETY

— LIMONTA —

## *SS 18 COLLECTION*

### **SOCIETY LIMONTA**

SS 36 - km 36, n°9  
23846 Garbagnate Monastero (LC) Italy  
t +39 031 857111  
f +39 031 857569  
society@limonta.com  
[www.societylimonta.com](http://www.societylimonta.com)

### **UFFICIO STAMPA**

Via Palermo 1, Milano  
Laura Giudici  
m +39 335 7565494  
press@societylimonta.com



#societylimonta  
#casualluxury  
#unconventionalluxury  
#mixandmatch

Per scaricare il materiale fotografico

[www.services.societylimonta.com](http://www.services.societylimonta.com)

username: pressarea  
password: ss2018