

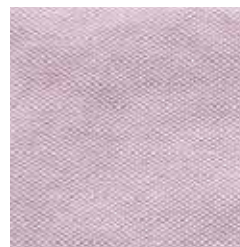
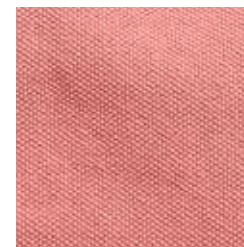
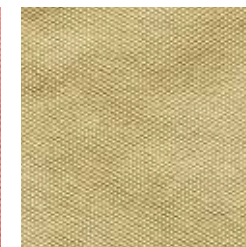


h o r i z o n

SS19

SOCIETY
— LIMONTA —

For the new season Society Limonta has conceived a graceful, light-hearted and dreamy collection of floating volumes. Freshness, florals and greenery, as well as brushstrokes in diluted colours, are the key ideas behind our **spring/summer 2019 Summer Horizon** collection and result in a leitmotif blend of soft and soothing tones that carries across our range of prints. Subtle and elegant touches of black underline the graphic patterns of our new designs to create a highly contemporary look. Combining well with neutral shades such as our **GREIGE** are this season's three colours: **OLIVE**, a delicate shade of green meets yellow; **FARD**, an orange pink; **MAUVE**, a soft mauve pink. New for this season are updated fabric weaves, surprising designs and patterns and, as always, the option to combine all of these in endless variations. Society Limonta brings summer landscapes, places and charm into your home to change and transform your everyday.

MAUVE**FARD****OLIVE****GREIGE**







SS19

summer horizon

p.6

bed

SOCIETY
— LIMONTA —

For your summer bedding we propose floral designs, polka dots, graphic patterns and lines that meet harmoniously with gentle, intense and layered colours. The result is a deconstructed bed, very much in the style of Society Limonta, or a new stylistic interpretation — an almost monochrome bed where unified tones take over with soft overlaps, leaving room for small digressions printed on the pillows or small contrasting colour details. Absolute protagonists are the sheets and pillowcases, which play with a wide range of volumes, fabrics and designs. The floating printed cotton voile is back in three designs: **DIP**, the new floral jungle with hints of black that highlight the pattern; **DAHL**, a reworking of a slightly more deco floral version; and **GEO**, an intersection of maxi watercolour brushstrokes that, like a large abstract painting, decorate the bed in a unique variant of grey tones. Our **REI** sheets and pillowcases are a little more full-bodied with a 'pyjama style' stripe on jacquard cotton crêpe while **FIOR** is a very refined floral, barely perceptible tone-on-tone design on a jacquard fabric. The designs of the printed pillowcases range from small coloured dots to different floral interpretations and sophisticated geometries that can all be combined. Completing the bedding range are three fabrics made of different materials and textures: **NASSA**, a netted linen that becomes a slightly coarse and substantial three-dimensional bedspread; **MINA**, also made of linen but structured more like a full-bodied lint; and **LITTLE**, a cover made of featherweight jaspé wool.





FIOR Jacquard cotton pillow cases
 NAP PINS Printed ramie pillow cases
 NAP SPRING Printed ramie pillow cases



DIP Printed cotton voile sheet
 NAP PINS Printed ramie pillow cases
 BINI Jacquard cotton pillow cases
 TOW Griffé cotton cushions



NAP DAHL Printed ramie pillow cases
 TOW Griffé cotton cushions
 REI Jacquard cotton pillow cases



SATEN Satin linen and cotton sheet, DIP Printed cotton voile sheet,
NAP PINS Printed ramie pillow cases, BINI Jacquard cotton pillow cases
TOW Griffé cotton cushions



REM Linen cushions

NAP SPRING Printed ramie pillow cases

FIOR Jacquard cotton sheet

LITTLE Jaspé wool blanket

NAP PINS Printed ramie pillow cases

REM Linen sheet



BINI Cotton jacquard sheet, REI Jacquard cotton sheet
 NASSA gauze linen bedspread, REI Jacquard cotton pillow cases
 FIOR Jacquard cotton pillow cases, NAP DAHL Printed ramie pillow cases
 TOW Griffé cotton cushions, LITTLE Jaspè wool blanket



BINI Cotton jacquard sheet, BINI Jacquard cotton pillow cases,
NITE Extra fine cotton pillow cases, MIRO double layer cotton voile sheet,
REI Jacquard cotton pillow cases, NAP TWIN Printed ramie pillow cases

NAP BIC Printed ramie pillow cases, GOFF Cloqué cotton bedspread,
TOW griffé cotton bedspread, TOW Griffé cotton cushions,
LITTLE Melange wool throw



NITE Extra fine cotton sheet, REI Jacquard cotton and silk sheet,
REI Jacquard cotton pillow cases, SATEN Satin linen and cotton pillow cases,
NAP PINS Printed ramié pillow case, NAP BIC Printed ramié pillow cases,
NAP PAT Printed ramié pillow cases, NAP TWIN Printed ramié pillow cases,
LITTLE Melange wool throw, MINA gauze linen bedspread



BINI Cotton jacquard sheet, BINI Jacquard cotton pillow cases,
REM Linen sheet, REM Linen pillow cases, SATEN Satin linen and cotton sheet,
SATEN Satin linen and cotton pillow cases, TOW Griffé cotton cushions,

GOFF Cloqué cotton bedspread, MINA gauze linen bedspread,
WOCA Wool and hemp blanket, DRAI HANG Cotton canvas shopping bag,
LOSE Wool gauze blanket



SS19

summer horizon

p.15

tables

SOCIETY
— LIMONTA —

The desire for a table that can be 'dressed up' for summer lunches and dinners has inspired a series of surprising designs with a strong visual impact that, like large artistic canvases, cover the table, decorating it. Our printed abaca tablecloths are characterised by three strong design identities. Two of them feature maxi polka dots with irregular shapes, akin to watercolour drops dilated on fabric; **SPOT1** plays with more regular and cadenced fields of colour, while **SPOT2** comes with an asymmetric layout. **MIX**, also printed on abaca, is the most artistic design for the table with a strong pictorial pattern that transforms from lines into a tartan and features large brushstrokes: it makes for a modern, decidedly unconventional and dynamic table!

For those who love an embroidered and sophisticated table, pure linen offerings **RIC** and **CIRCLE** come in an asymmetrical floral pattern that elegantly references tradition while decorating only one side of the tablecloth, or in a sort of Sangallo pattern with large polka dots that punctuate the fabric. For an informal table we have the new American **CABLÉ** in large-mesh raw cut cotton, a fresh and practical option for the summer season. Our ramie napkins complete the collection with six new designs.





ONDA Limoges porcelain
dinner plate

ONDA Limoges porcelain
soup plate

CABLE cotton
placemats

NAP PINS Printed
ramié napkins

NAP TWIN Printed
ramié napkins



ONDA Limoges porcelain
soup plate

CABLE cotton placemats

NAP DAHL Printed
ramié napkins

TAB FR linen napkins



CABLE cotton placemats

ONDA Limoges
porcelain side dishNAP SPRING Printed
ramié napkinsNAP PINS Printed ramié
napkins

BON linen placemats

ONDA Limoges
porcelain side dishNAP PAT Printed
ramié napkinsNAP BIC Printed
ramié napkins



MAYA Linen canvas placemats

BUTO Limoges porcelain
soup plateNAP PAT Printed
ramié napkins

TAB FR linen napkins



MAYA Linen canvas placemats

ONDA Limoges porcelain
soup plateNAP BIC Printed
ramié napkinsNAP PINS Printed
ramié napkins

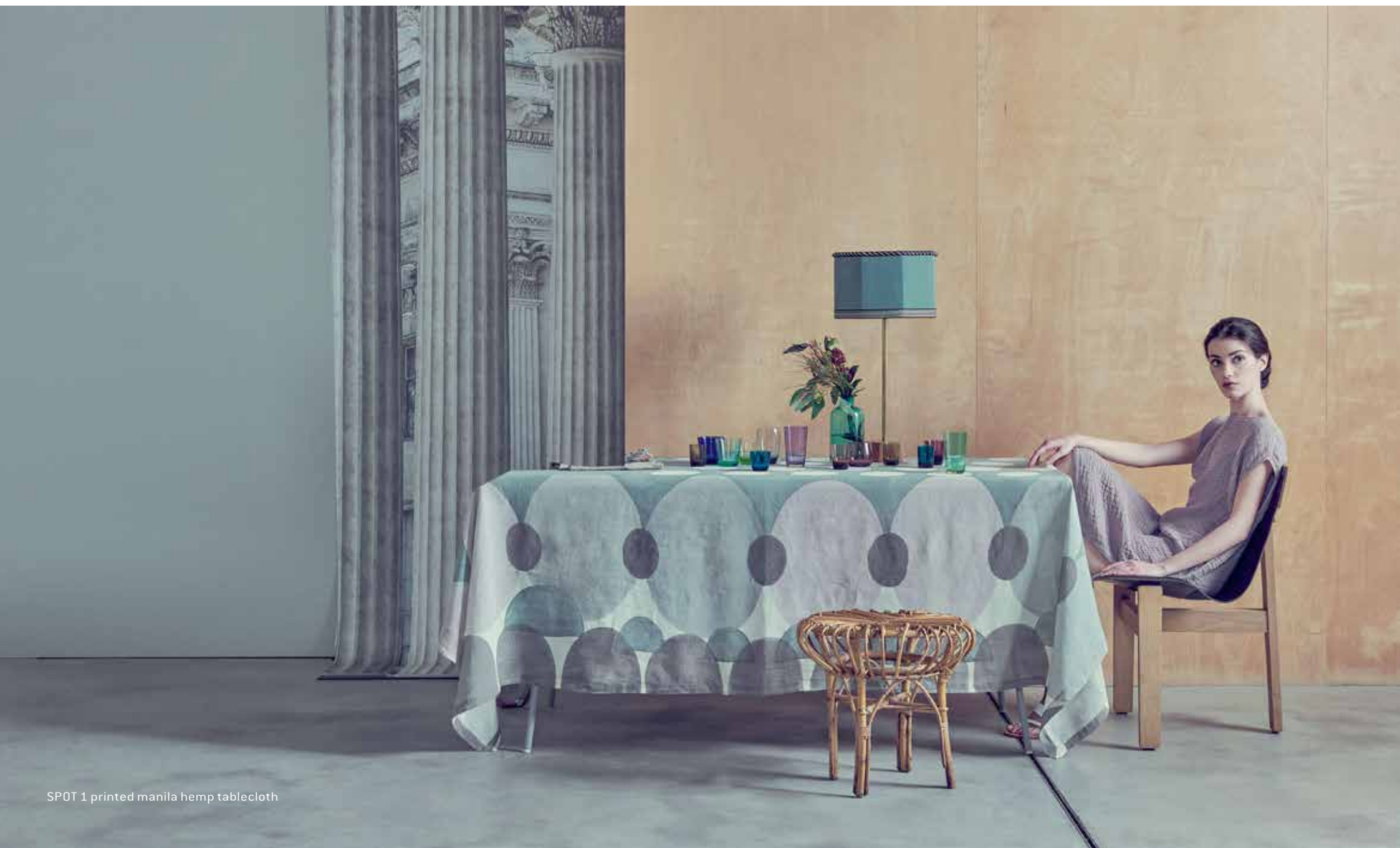


RIC Embroidered linen tablecloth

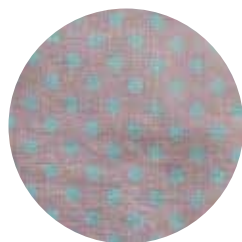
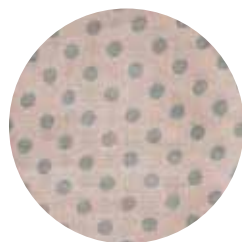
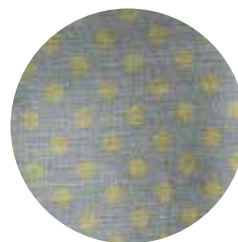
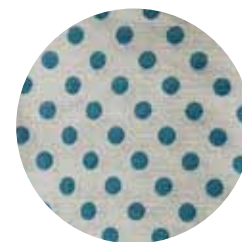
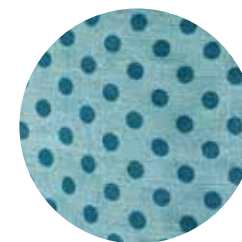
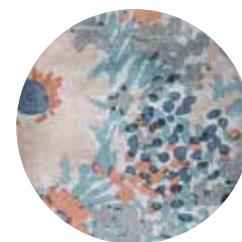
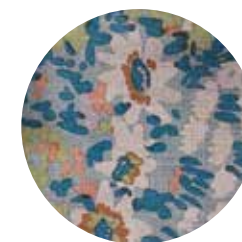


CABLE cotton placemats, NAP PINS Printed ramie napkins,
BUTO Limoges porcelain soup and dinner plate





SPOT 1 printed manila hemp tablecloth

NAP PINS
FARDNAP PINS
MAUVENAP PINS
VERBENANAP PINS
GREIGENAP PINS
FUMONAP PINS
OTTANIONAP PINS
AGAVENAP BIC
VERBENANAP BIC
AGAVENAP BIC
TISANANAP SPRING
TISANANAP SPRING
FUMONAP PAT
OLIVENAP PAT
VERBENANAP DAHL
OLIVENAP DAHL
MAUVENAP DAHL
VERBENA

SS19

summer horizon

p.24

bathroom

SOCIETY
— LIMONTA —

The bathroom is tinged in the colours of nature and transforms our personal home spa into a place of well-being and daily regeneration, where the quality of the objects amplifies the quality and harmony of our daily gestures. The care that goes into our fabric research and the beneficial effect of colour is enhanced by the use of pleasant materials. From the almost yellow green of the large exotic leaves, to the mauve colour of tender spring flowers and the most intense coral, our spring/summer colours are interpreted on towels, linens and cottons, leaving room for the neutral variations of greige and anthracite for lovers of more muted tones. New launches for the bathroom include two linen prints that brighten up the towel collection. **RETI** and **WAW** play with two geometric and almost abstract designs that recall motifs from the '60s and '70s. Combined with the single-tone pieces, and produced in this season's colours, the printed towels give a 'fashion' touch to the bathroom, offering something refined and unusual.

TREDI' Waffle weave cotton bathrobe, KUR cotton bathrobe,
RETI Printed linen hand towel, WAW Printed linen hand towel





TREDI Telo bagno in nido d'ape di cotone, WAW Asciugamano in lino stampato, WAW Asciugamano in lino stampato, TOW Set di asciugamani in cotone griffé, COCO Set di asciugamani in cotone jaspé, KUR Set di asciugamani in cotone



COCO Jaspé cotton towel set, WAW Printed linen hand towel
TOW Griffé cotton towel set, TREDI Waffle weave cotton bath towel,
DRAI NEW Linen bath towel






DRAI NEW Linen bath towel, TOW Griffé cotton towel set,
LIPE Waffle weave linen bath towel, RETU Printed linen hand towel



TREDI' Waffle weave cotton bathrobe, KUR cotton bathrobe,
 RETI Printed linen hand towel, WAW Printed linen hand towel ,
 COCO Jaspé cotton towel set, CRISP Crêpe cotton terry towel set,
 WAW Printed linen hand towel, KUR Soft cotton bath towel,
 LINGE Terry linen bath towel, KUR Soft cotton bath towel



A close-up photograph of pink peonies in bloom, set against a dark, moody background of green leaves and stems. The lighting is soft, highlighting the delicate petals of the flowers.

SS19

summer horizon

p.32

accessories

SOCIETY
— LIMONTA —

The 2019 spring/summer collection features new wearable accessories: the urban version of the maxi cotton canvas tote is a rectangular shoulder bag that closes with a practical zipper. The **DRAI TAIT** bag is now available in new fresh summer colours and is also perfect for work. A fresh new piece for your spring wardrobe is the light and soft **CREP5** linen scarf that comes in neutral tones and naturally also in this season's colours.





DRAI TAIT Cotton canvas travel bag

SOCIETY

LIMONTA

society limonta

head office

SS 36 - km 36, n°9
23846 Garbagnate Monastero (LC) Italy
t +39 031 857111
f +39 031 857569
society@limonta.com

www.societylimonta.com

society limonta

press office

MILAN – HEAD OFFICE
Society Limonta
Via Palermo 1, Milan
Laura Giudici
m +39 335 7565494
press@societylimonta.com

society limonta

international press area

www.services.societylimonta.com

login: pressarea
password: ss2019

social



#societylimonta
#casualluxury
#unconventionalluxury