



**kvadrat shade**

## Aesthetically outstanding, versatile roller blind solutions

Whatever your vision – whether it is to enhance visual, acoustic or thermal comfort, or a combination of all three – you can realise it with the Kvadrat Shade roller blind solutions. Designed by Ronan & Erwan Bouroullec and created with durable, high quality materials and backed by best-in-class support, it offers the perfect combination of flexibility, functionality and aesthetic excellence.

All our roller blinds and metallised textiles are manufactured at our production facilities in Eibergen, the Netherlands. As the inventor of metallised textiles, we constantly strive to improve the performance and sustainability of our product portfolio. This enables you to reduce CO<sub>2</sub> emissions and save on cooling and heating within buildings.

Our roller blinds are made to measure and assembled by hand by our team of craftspeople. This agile set up allows us to design and deliver window covering solutions for even the most challenging spaces.



## Benefits

Our roller blind solutions enable you to complete any design theme, and support a healthy, productive environment.

### **Quality of space**

With the Kvadrat Shade roller blind solutions, you can create the optimal indoor climate. Whilst providing natural light and views, our roller blinds eliminate glare and optimise visual, acoustic and thermal comfort. With the Kvadrat Shade roller blinds you are able to increase well-being and productivity in every space you design.

### **Design**

Our modular roller blind solutions are built-to-last and provide absolute creative freedom. You can complete any design theme and meet a wide spectrum of functional and space-specific requirements. With our metallised textiles you can even omit external solar shades, without compromising on thermal comfort.

### **Best-in-class support**

The Kvadrat Shade offering includes personalised support – from initial consultation to installation. Our expert centre can support you with energy-saving calculations, credits for green building certificates like LEED and BREEAM, and advice on specifications, regulations and budget to create the optimal solution for your project.

## Increase well-being with metallised textiles

Large windows, a typical feature of contemporary architecture, can reduce thermal and visual comfort. On sunny days the sun will cause glare on screens and heats up the interior considerably. With our collection of metallised roller blind textiles, you can fight the light and beat the heat, creating the optimal indoor climate.

### **Thermal comfort**

Metallised textiles reduce the need for heating in winter and cooling in summer, and therefore diminish energy consumption up to 25%\*. The less energy used, the lower the carbon emissions; contributing to a sustainable future.

Our metallised textiles are independently verified as an equivalent alternative to outdoor solar shading: in the summer the metallised textiles reflect sunlight, keeping indoor temperatures from rising rapidly. In the winter, the aluminium layer acts as an insulator to reduce heat loss and keep heat inside.

### **Visual comfort**

Metallised textiles create visual comfort by providing control over glare, whilst maintaining good visual contact with the outside. Our metallised textiles are finished with an ultra-fine layer of non-transparent aluminium. This enables a metallised textile to reflect up to 74% of solar radiation and prevent diffuse light transmission.

In general, an openness factor of only 2-4% combined with a light transmission of up to 7% eliminates glare and ensures a good view to the outside. With metallised roller blinds you can block blinding sunlight, whilst still enjoying the view and plenty of natural daylight.

\*Source: Based on dynamic simulations by using Parasol – Lund University





## Our sustainability strategy

At Kvadrat Shade, we seek to drive the transformation towards circular building design. To achieve this ambition, we follow Conscious Design Principles. Our solutions can support your decarbonisation goals, and we provide transparency through impact documentation.

Our innovative, long-lasting solutions enable opportunities for positive change and support the 17 UN sustainability goals. At the same time, they elevate quality of space, inspire well-being, and provide exceptional creative flexibility.

If we are to meet the goals of the Paris Agreement, driving the transition towards net zero buildings is essential. Building operations – specifically the energy used for heating, cooling and lighting – are responsible for 28% of annual global CO<sub>2</sub> emissions\*.

The impact documentation and third-party verifications we offer, show how you can use our solutions to strengthen the sustainability credentials of your project. Specifically, they evidence how to heighten energy efficiency, reduce carbon emissions, and meet criteria for green building certificates, such as BREEAM and LEED.

Read more about our corporate sustainability strategy [here](#).

\*ABC Global Status Report 2018



## Introducing our Carbon Neutrality Tool towards net zero building operations

According to the Paris Agreement, every building must be 'net zero' by 2050. The sooner we get there, the better – so to help drive progress, we have developed a carbon neutrality tool.

The Carbon Neutrality Tool enables you to configure different solutions for your project and discover how long it will take to hit the carbon neutral break-even point.

Critically, the tool takes into account that the creation of our products inevitably has an environmental impact. It balances this against the ability of our solutions to minimise CO<sub>2</sub> emissions\* by negating the need for heating and cooling.

Your results estimate how long it will take for your Kvadrat Shade solution to reach the carbon neutrality break-even point, as well as illustrating the potential CO<sub>2</sub> savings for your project up to this stage.

Gain a deeper insight into how you can enhance energy efficiency and aesthetic performance with a Kvadrat Shade solution by using our tool.

Calculate your CO<sub>2</sub> savings [here](#).

\*Verified by third-party institutes

Any space – Any window – Any need

Create your Kvadrat Shade solution in three simple steps:

**Step 1: Textile selection**

Kvadrat Shade textiles reflect a commitment to functional performance, aesthetic excellence and sustainable design through our non-PVC offering. Produced by Kvadrat and created in collaboration with a roster of celebrated designers, such as Alfredo Häberli, Louise Sigvardt and Ronan & Erwan Bouroullec.

**Step 2: Hardware system**

Whatever your vision for your space there is a Bouroullec-designed Kvadrat hardware system to match. So, whether you want a virtually invisible solution or a bold design statement, the Kvadrat Shade solution makes it possible.

**Step 3: Operating option**

You get a full choice of manual and automatic control options with the Kvadrat Shade solution. Like all the other components, the control systems are Bouroullec-designed.





## Our textiles

### **Kvadrat High Performance Textiles**

We offer a range of roller blind textiles that enable you to maximise thermal, visual, or acoustic comfort. The Kvadrat High Performance Textiles range supports a healthy, productive environment. Moreover, the textiles offer superior functional performance and longevity.

### **Metallised textiles**

Our metallised textiles offer a blend of functional and design excellence, which conventional textiles cannot match. They create visual comfort by providing control over glare and access to views, and thermal comfort by providing control over heat regardless of the chosen colour. Some of the metallised textiles can even be specified to elevate acoustic quality.

Our metallised textile collection includes *Apo*, *Clearview* and *Silvretta*.

### **Healthcare textile**

In today's post-COVID world, there is a strong demand, particularly from the healthcare sector, for a safe, simple to disinfect roller blind textile. Athos meets this demand and avoids the health risks associated with conventional 'safe' coated textiles. It is unique on the market.

Our healthcare textile collection includes *Athos*.

### **Design textiles**

A commitment to visionary design has always been at the heart of the Kvadrat offering. With our Kvadrat roller blind textiles, we strive to continue this legacy - not only with the roller blind textiles we create, but also in the ways we support our clients' creative ambitions.

A key differentiator for Kvadrat roller blind textiles is the range of colours, textures and transparencies we offer. These provide an unprecedented degree of design freedom and enable architects and designers to enhance the natural quality of spaces.

Our design textile collection includes *Gonzen*, *Loa*, *Meru* and *Russell*.



## Our hardware Open systems

### Minimal bracket

Minimal is an interior roller blind solution designed by Ronan & Erwan Bouroullec to offer the 'best minimum'. Its core component is an innovative bracket crafted from a single piece of folded steel.

Minimal not only minimises the use of materials; it is also durable and easy to assemble, install and use. It is exceptionally flexible too, both aesthetically and functionally.

Simple to disassemble, Minimal allows for the textile to be easily changed - without having to dismantle or dismount the complete system. Furthermore, its minimalist, industrial expression seamlessly fits most spaces.

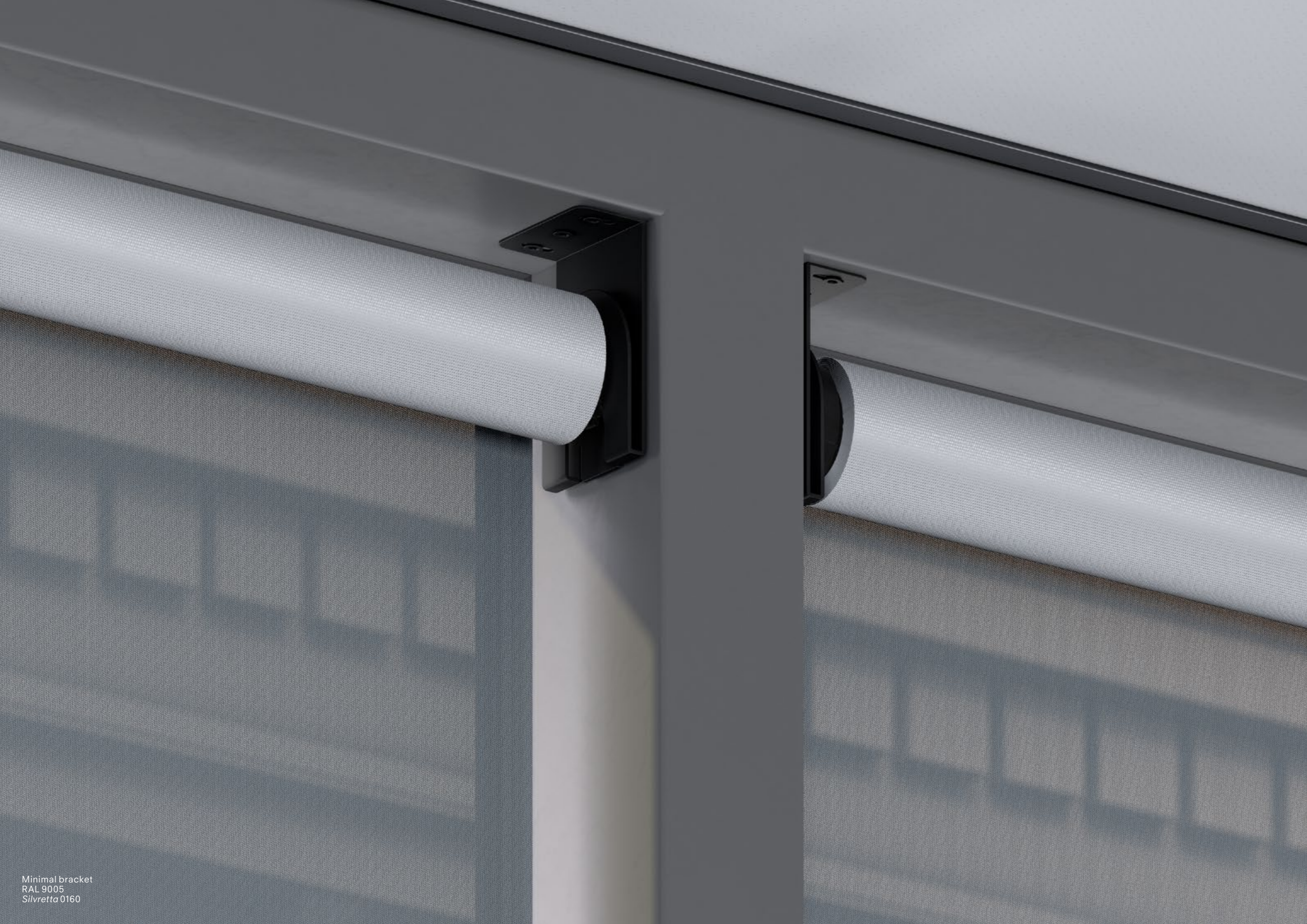
The Minimal bracket comes in a selection of colours and finishes, and three sizes: S, M and L. It can accommodate all the available operating options: chain, patented Twin Pull (available for Medium only), and motorised. For fast and secure installation, profiles in customised widths are available for the S and M systems.

### Brackets

Designed by Ronan and Erwan Bouroullec, Kvadrat Shade Brackets offers exceptional creative flexibility. Whether you want a subtle unicoloured or a more vivid, playful look, it provides a choice of finishes and colours, which enables you to find the ideal solution for your space. The Kvadrat Shade Brackets are made from premium-quality materials and built-to-last.

Kvadrat Shade Brackets are simple to install, with a particularly clean aesthetic. Cover caps conceal all screws while the matching base and brackets align perfectly.





Minimal bracket  
RAL 9005  
*Silvretta* 0160

## Semi-open systems

### **Semi-open cassette**

The Kvadrat Shade Semi-open cassette protects the textile, but without covering it completely. Aesthetically clean, it can be mounted on walls and ceilings with no visible screws. A specially engineered finishing component virtually eliminates the light gap at the top. The Kvadrat Shade Semi-open cassette is made from premium-quality materials and built-to-last.

Available in a range of colours and finishes, the Kvadrat Shade Semi-open cassette lets you seamlessly complete any design theme – whether you desire an understated look or vibrant colour accents. The roller blind can be combined with cable side guide to keep the textile and bottom bar in place.

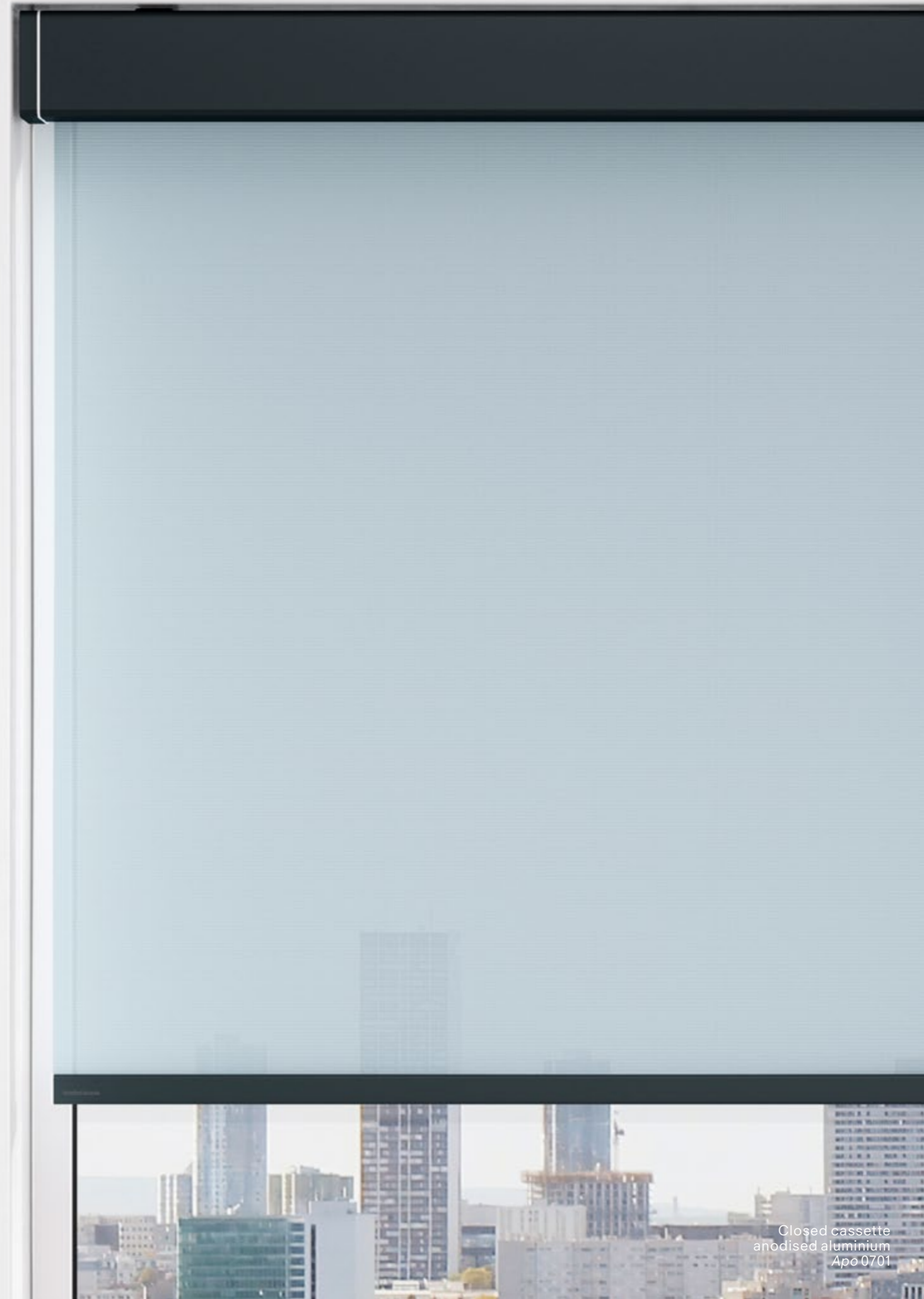


## Closed systems

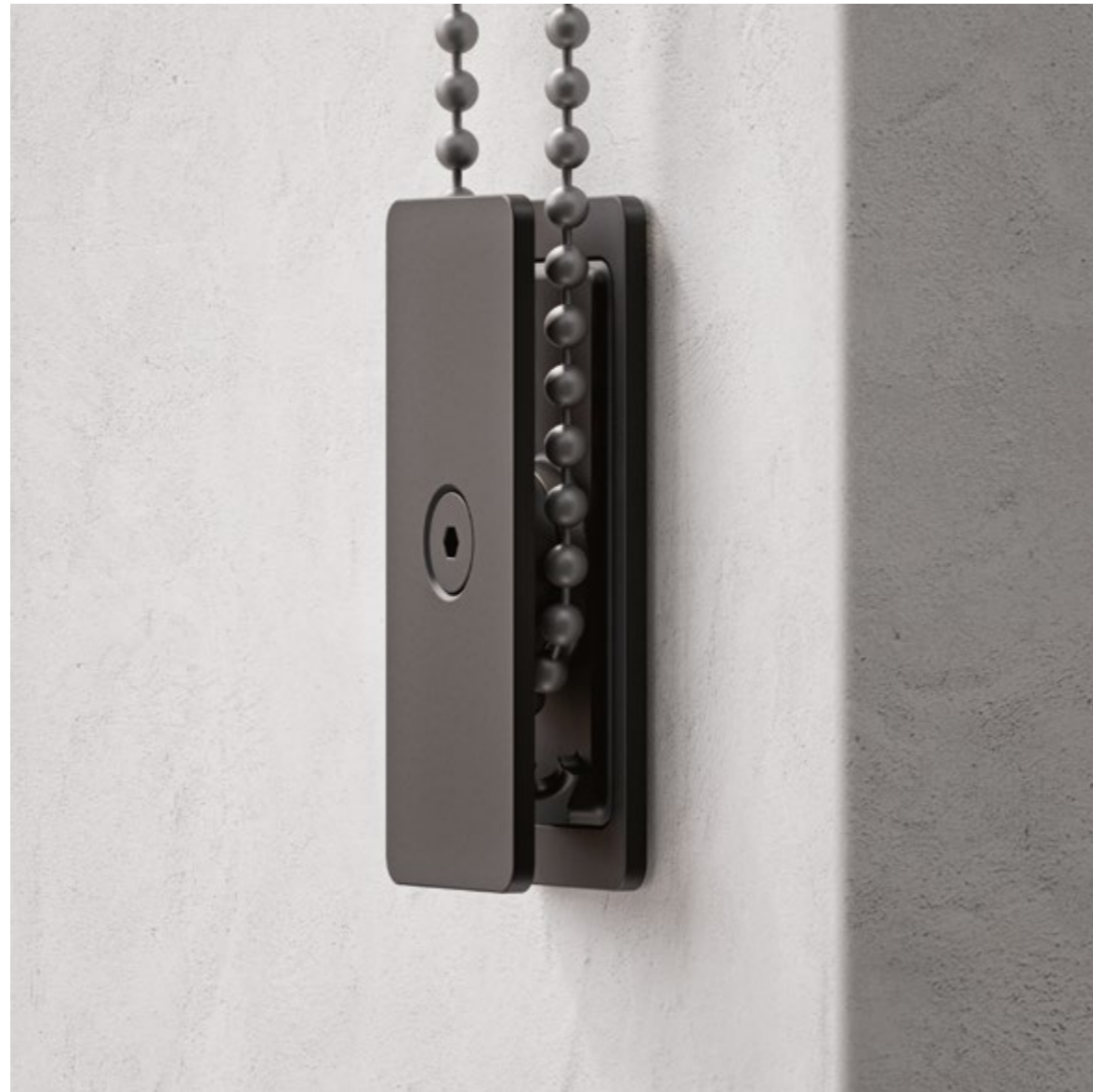
### **Closed cassette**

The most smart cassette option, the Kvadrat Shade Closed cassette contains the textile roll and the bottom bar when the blind is pulled up. It can be mounted on walls and ceilings and features a specially engineered finishing component, which almost completely removes the light gap at the top.

An appealing selection of colours and finishes – ranging from subtle to bold – ensures the Kvadrat Shade Closed cassette makes it possible to complete any interior concept. Can be combined with cable side guide to keep the textile in place, or with a profile side guide when a complete room darkening solution is needed. The Kvadrat Shade Closed cassette is made from premium-quality materials and built-to-last.



## Operating options



### **Kvadrat Shade control systems**

Whatever your preference for controlling your roller blinds, you can realise it with the versatile Kvadrat Shade solution. In common with all the other components, the control systems are made from premium-quality materials and built-to-last.

### **Chain**

- Simple to install and operate
- Suitable for most blind sizes
- The chain operated version comes with an optional innovative chain tensioner, which complies with the standard BS EN 16434:2014\* and the standard NEN-EN 13120+A1

Whenever children are present, the chain tensioner must be used. To avoid any possibility of strangulation it should be mounted to a wall or window frame.

### **Twin Pull**

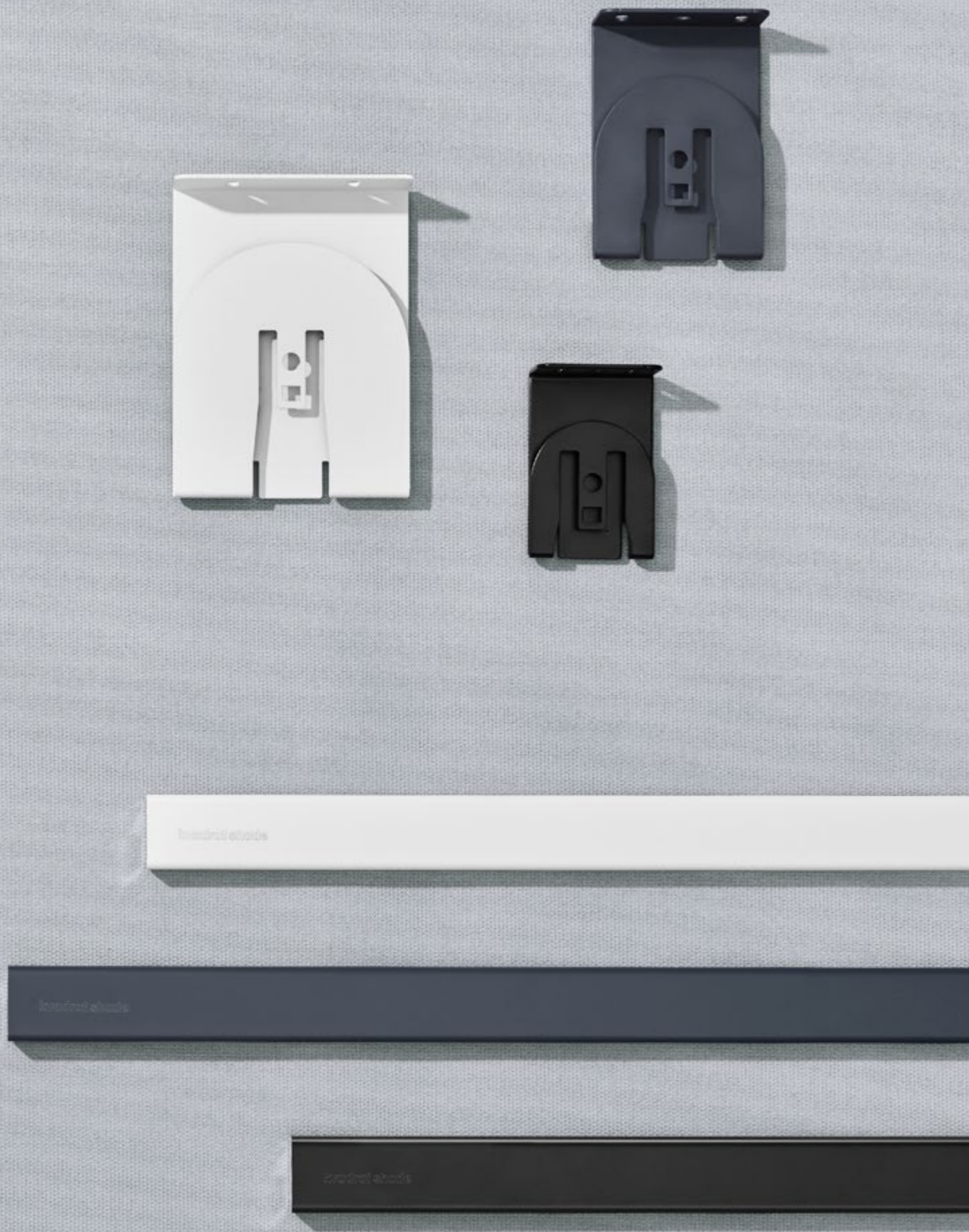
- Simple pull control with all benefits of chain control
- Safe: no need for child safety devices
- Suitable for blinds up to 190 cm wide

### **Motorised**

- Safe: no need for child safety devices
- Control blinds at any height
- Control multiple blinds at once
- Use with sensors to get maximum value from your blinds
- Align all blinds at the same level for improved aesthetic comfort
- Integrate easily with building management systems



\*Evaluation by Bureau Veritas, a specialised testing institute. It covers the safety requirements for safety devices for internal blinds and protection from strangulation hazards.

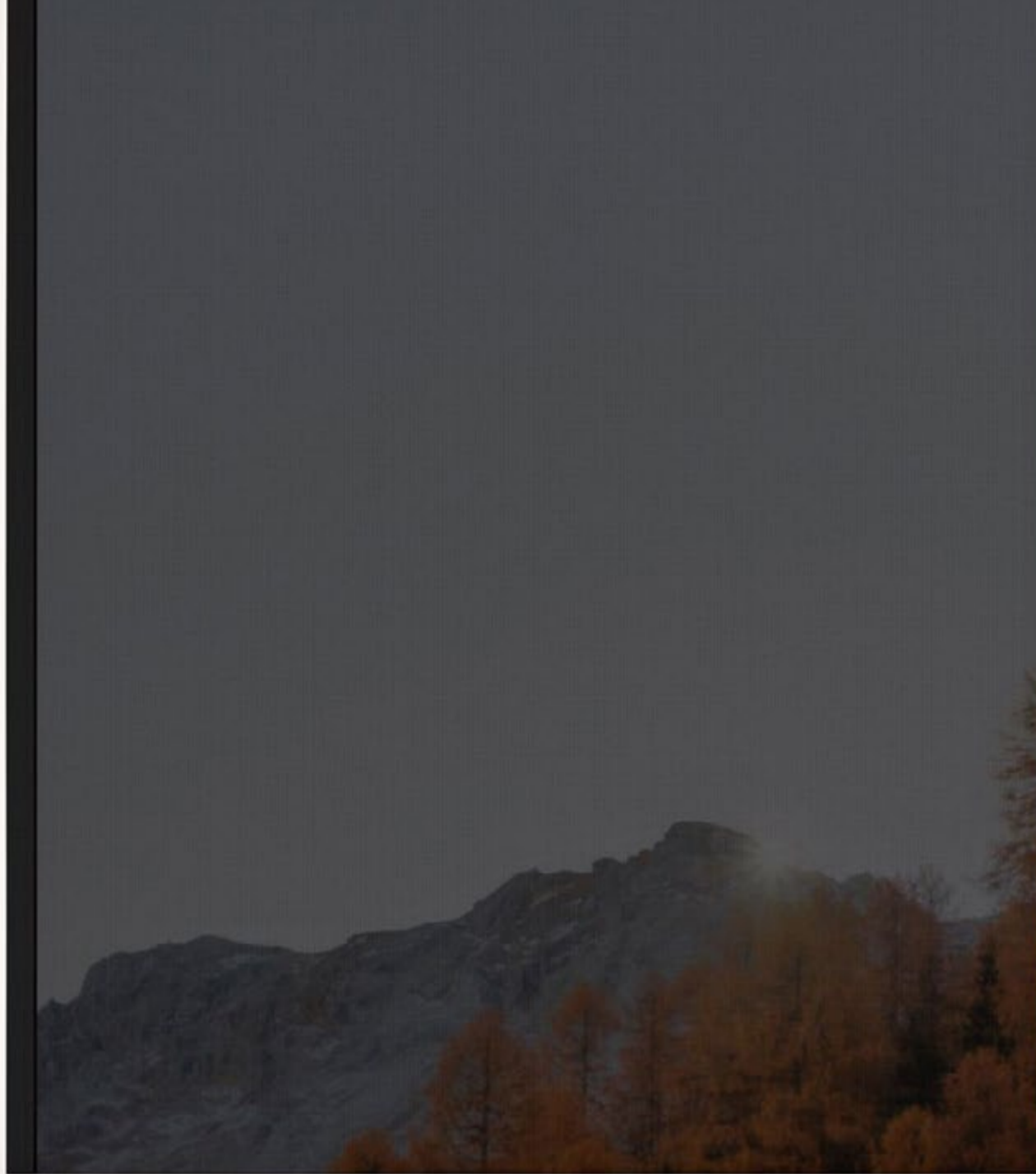


# Collection overview

	Minimal	Brackets	Semi-open cassette	Closed cassette
<b>Wall mount</b>				
<b>Ceiling mount</b>				
<b>Bottom bar</b>	 Laser-engraved aluminium	 Textile pocket		
<b>Side guides</b>	 Cable can be combined with Minimal cassette, Semi-open cassette, and Closed cassette		 Profile can be combined with Closed cassette	
<b>Operation</b>	Chain	Twin Pull*	Motorised	

\*Not available for Minimal Small and Minimal Large

## Compare transparencies with our View Through Tool



We have developed a View Through Tool so you can compare transparencies between all the textiles in our collection. Kvadrat Shade offers exceptional view through, which is colour independent, and without compromising on performance or functionality.

Discover our View Through Tool [here](#).



Ecostrat® Aluclad





Client: Modular Circular House, DK  
Location: Hillerød, Denmark  
Architecture and design: Studio Pneuma – Diana Lindboe and Camilla Boccardi Christensen  
Executive architects: Prisme Architects  
Solution: Kvadrat Shade Brackets roller-blind solution used on building's south-façade incorporating Silvretta  
Photography: D4, Studio Pneuma, Claus Troelsgaard



Client: Tarafdar Studio, UK  
Location: Cardiff, Wales  
Architecture and design: Tarafdar studio  
Solution: Kvadrat Shade Semi-open roller blind solution  
with Apo metallised textile  
Photography: Ed Reeve



Client: Well, Well, Leading Scandinavian hospital  
Location: Scandinavia  
Architecture and design: Link Arkitekter A/S, 3XN, Sweco,  
Nickl & Partner, Arkitekt Kirstine Jensen Tegnestue  
Solution: Kvadrat Shade brackets roller blind solution  
with Athos healthcare textile  
Photography: Jonas Danholt

